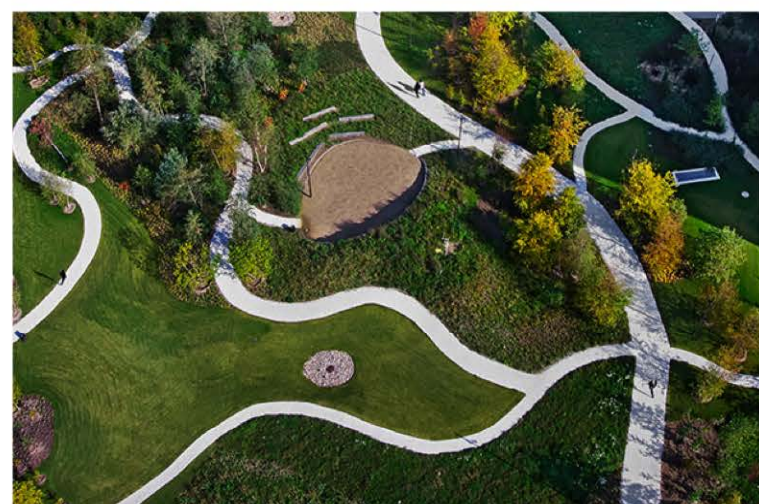
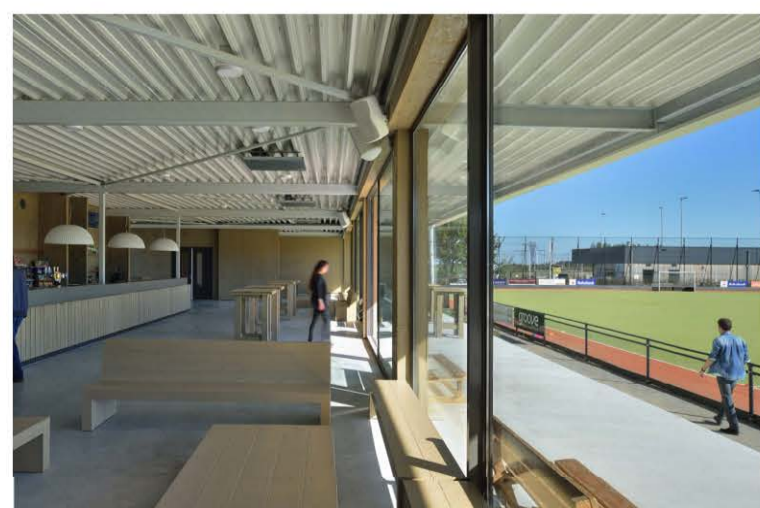


KEY

- 1 68 x 105m soccer pitch, with 3m run off to perimeter of pitches. Playing area to feature shared lighting to allow for winter/night time play and training.
- 2 One 40 x 60m junior soccer pitch, with 3m run off to perimeter of pitches. Playing area to feature shared lighting to allow for winter/night time play and training.
- 3 Under 10, 11 and 12 54 x 40m soccer pitch.
- 4 Under 10, 11 and 12 54 x 40m soccer pitch.
- 5 Under 9, 36x42m soccer pitch.
- 6 Under 6/7, 4 x 20 x 30m soccer pitches
- 7 New shared clubroom facility with flexible meeting space, kiosk, male/female change rooms, male/female referee change rooms and toilets. Potential for soccer club to lease out clubrooms to Scout Club, or other community organisations. Outdoor seating allocated in architectural design.
- 8 Paved pedestrian entrance to clubroom and soccer pitches. Removable bollards, to allow for occasional service vehicle/emergency access or food van access. Bicycle parking provided.
- 9 Remove car park and replace with fenced playground facility, interlinked with existing playground. New playground addition to feature BBQ shelters, multi age equipments and nature play elements.
- 10 Existing bike track playground (bike track shown in grey); retain all other play features and BBQ shelters within area.
- 11 Remove parking area, and extend bike play into this zone. Location of bike track to avoid existing play equipment, and broaden age range of play space. Gated access from corner entry space off Seymour Street and Race Course Road.
- 12 2.5m wide shared pathway along Seymour Street, with parallel parking zone to east, and planted buffer to new parking area.
- 13 New parking area off Seymour Street with all abilities parking spots, featuring additional trees/planting, water sensitive urban design, and pedestrian priority access. New bus zone with bus shelter.
- 14 Existing skate park retained and extended to create an improved youth facility, bmx circuit, basketball court; removable bollard to allow for occasional service vehicle access. Generous paving area to allow for food van set up, or other events to occur.
- 15 New pedestrian/cyclist circuit to weave between existing and proposed trees and create a loop with multiple access points.
- 16 Fenced dog park for small dogs with access off Seymour Street.
- 17 Fenced dog park for big dogs.
- 18 Vehicle entry gate.
- 19 Plant avenue of trees along the street edge.
- 20 Graded pathway to upper pitches (max. 1:20)
- 21 Picnic shelter.
- 22 Install signage to formally identify the area as Ted Jeffries Memorial Park.
- 23 Existing public toilet facility to be upgraded.
- 24 Directional marker for car park entrance.
- 25 Reorientated swale, opportunity for water sensitive urban design planting.
- 26 Future picnic shelter with water point.
- 27 Airlock interior black chainwire fenced with pedestrian/dog gates alongwith adjacent dog bins and water point at main entry.
- 28 Vegetation rehabilitation area for threatened species community. Potential for bike circuit trail along disturbed areas.
- 29 Fencing around soccer fields perimeter



TED JEFFRIES MEMORIAL PARK MASTERPLAN 2021-2035

SEYMOUR STREET, BRIGHTON, TAS, 7030
PREPARED FOR BRIGHTON COUNCIL

